

Illinois Broadband Mapping

Illinois Association of County Board Members Broadband Summit
20th October 2022

Broadband Mapping in Illinois

In Illinois,

- State in collaboration with mapping vendor, Connected Nation started creating our own state maps in 2021
 - Finer granularity than the census block level data
- First set of maps released in June 2021
- Revised every six months. The latest update was made on 31 May 2022. Next update scheduled for November 2022

Illinois Broadband Mapping Process

- **ISP Outreach**- Collect, Process, Analyze, and Clarify residential broadband access
- **Field Validation** for areas that need further investigation- for providers who did not provide granular access data, or for whom FCC Form 477 data had to be utilized, state funded projects that were completed
- The access data layers are the used to identify unserved and underserved areas further used to define eligibility for the state's Connect Illinois Infrastructure Grant

Illinois Broadband Lab

The screenshot shows the Illinois Broadband Lab website. At the top left, there are logos for the Illinois Department of Commerce & Economic Opportunity, Office of Broadband, and the Benton Institute for Broadband & Society. The navigation menu includes: HOME, ILLINOIS BROADBAND LAB, **MAPPING** (circled in red), BROADBAND READY, AFFORDABILITY STUDY, and ILLINOIS OFFICE OF BROADBAND. A search icon is also present.

Below the navigation, a red text overlay reads: "Static Maps for Wireline Access by Speeds for all Illinois Counties".

The main content area features a dark background with the text "ILLINOIS BROADBAND LAB" and a description: "Collaboration on broadband data, mapping, research, and publication driven by the Illinois Office of Broadband, University of Illinois at Urbana-Champaign, University of Chicago, and Benton Institute for Broadband & Society". A blue button labeled "EXPLORE ILLINOIS BROADBAND" is positioned below the text.

On the right side, there is a preview of "The Illinois Broadband Map". The map interface includes a title "The Illinois Broadband Map" with a subtitle "Published June 30, 2021. Please provide feedback here." Below the title are two tabs: "ACCESS" and "STATISTICS". The "ACCESS" tab is active, showing a list of speed tiers with checkboxes:

- 1 Gbps Download/1 Gbps Upload (Wireline)
- 1 Gbps Download/1 Gbps Upload (All Fixed)
- 100 Mbps Download/20 Mbps Upload (Wireline)
- 100 Mbps Download/20 Mbps Upload (All Fixed)
- 25 Mbps Download/3 Mbps Upload (Wireline)
- 25 Mbps Download/3 Mbps Upload (All Fixed)

Below this list are two more tabs: "GENERAL" and "FEDERAL". The "GENERAL" tab is active, showing a list of layers with checkboxes:

- Boundary-based Layers (Click Text to Expand)
- Census Blocks
- Congressional Districts
- County Boundaries
- Electric Utility Boundaries

The map itself shows a heatmap of Illinois counties with orange and yellow colors indicating broadband access levels. A search bar at the top right of the map says "Zoom to address". On the right side of the map interface, there is a "Speed Test" section with a speedometer icon and the text "Take the Speed Test!". Below that is a legend with the following items:

- 100 Mbps Download/20 Mbps Upload (Wireline)
- Boundary-based Layers (Click Text to Expand)
- County Boundaries
- 25 Mbps Download/3 Mbps Upload (Wireline)
- Broadband (25M/3M wireline)

At the bottom right of the map, there are logos for EPA, FAO, NOAA, and esri.

State and Federal Broadband Mapping efforts

Based on the Broadband Deployment Accuracy and Technological Availability Act (Broadband DATA Act), the FCC is required to its requirement to create a national broadband map, a critical component for determining how federal Broadband Equity, Access, and Deployment (BEAD) Program infrastructure dollars will be distributed.

FCC's Process

- The FCC opened the ISP access data filing process from June 30, 2022- September 1, 2022, using the Broadband Data Collection (BDC) platform.
- The FCC is expected to release the first set of new maps in mid-November 2022.
- At that point, there will be a challenge process to ensure the accuracy of the data shared by ISPs, which would incorporate challenges from individuals as well as communities.

Illinois Office of Broadband Mapping Updates

- For the next update to Illinois Broadband Mapping, Illinois Office of Broadband has also recently completed their outreach to ISPs to receive the most current access data.
- FCC Serviceable Locations Fabric now available. Illinois has gotten access to their own and we are working with our Mapping Vendor CN on processing and analyzing the data in comparison to NextGen 911 Illinois data.

Illinois Broadband Map

MAPPING DEMONSTRATION

The Illinois Broadband Map
Published May 31, 2022. Please provide feedback [here](#).

ACCESS STATISTICS GRANT ELIGIBILITY

- 1 Gbps Download/1 Gbps Upload (Wireline)
- 1 Gbps Download/1 Gbps Upload (All Fixed)
- 100 Mbps Download/20 Mbps Upload (Wireline)
- 100 Mbps Download/20 Mbps Upload (All Fixed)
- Unserved Areas - Lacking 100 Mbps Download/20 Mbps Upload
- 25 Mbps Download/3 Mbps Upload (Wireline)
- 25 Mbps Download/3 Mbps Upload (All Fixed)
- Fiber Broadband
- Cable Broadband
- DSL Broadband
- Fixed Wireless Broadband
- Mobile 5G & LTE Broadband
- Max Adv. Download Speed (≥ 25M/3M)
- Max Adv. Upload Speed (≥ 25M/3M)
- Density of Providers (≥ 100M/20M)
- Density of Providers (≥ 25M/3M)
- Underserved Wireline Areas
- Underserved Areas (Fixed, Terrestrial)
- Unserved Areas at 25M/3M (Census 2010)

GENERAL FEDERAL STATE PROJECTS

- Connect Illinois Public WiFi Hotspots
- Connect Illinois Round 2 Project Grants
- Connect Illinois Round 1 Project Grants
- IDOT Multi-Year Plan

Zoom to address

Speed Test Adoption Funding About

Illinois Department of Commerce & Economic Opportunity OFFICE OF BROADBAND
JB Pittman, Governor

Take the Speed Test!

Download static maps for counties, school districts, and congressional districts at the [Illinois Broadband Lab](#)

[Download Coverage Speed Files \(Shapefile format\)](#)

Legend Query/Locate Add Data Export Map

- 1 Gbps Download/1 Gbps Upload (Wireline)
- 100 Mbps Download/20 Mbps Upload (Wireline)
- 25 Mbps Download/3 Mbps Upload (Wireline) Broadband (25M/3M-wireline)

Esri

Illinois Broadband Map

Other Useful Data layers:

- Access by Speed and Technology (Access Tab)
- Density of Providers (Access Tab)
- Density of households in Unserved Areas (Access Tab)
- Density of households without internet subscription/access (Adoption Tab)
- Connect Illinois Rd I & Rd II Funding (State Project Tab)
- Federal funding (Federal Tab)

Access by technology types

The Illinois Broadband Map

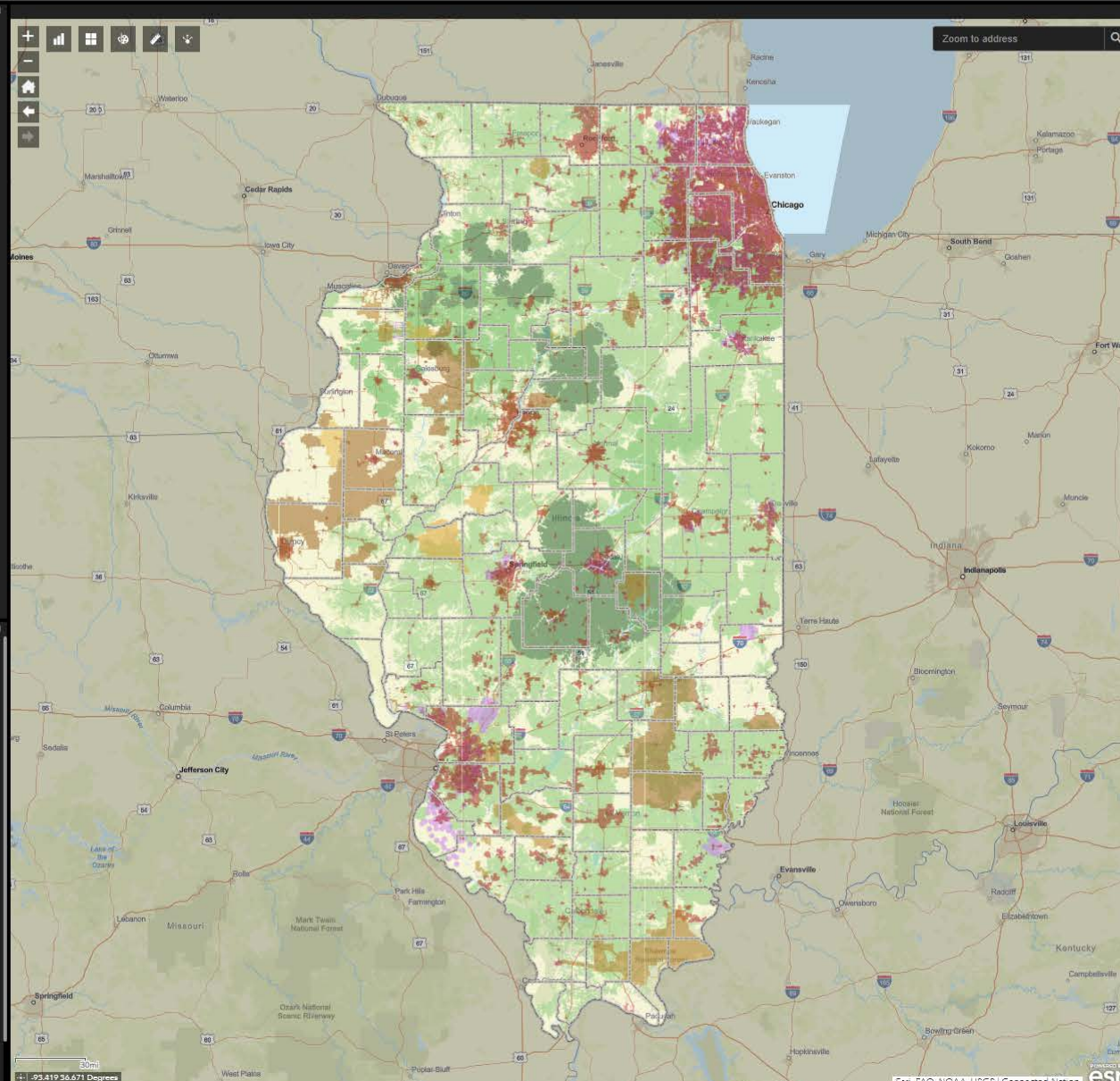
Published May 31, 2022. Please provide feedback [here](#)

ACCESS STATISTICS GRANT ELIGIBILITY

- 1 Gbps Download/1 Gbps Upload (Wireline)
- 1 Gbps Download/1 Gbps Upload (All Fixed)
- 100 Mbps Download/20 Mbps Upload (Wireline)
- 100 Mbps Download/20 Mbps Upload (All Fixed)
- Unserved Areas - Lacking 100 Mbps Download/20 Mbps Upload
- 25 Mbps Download/3 Mbps Upload (Wireline)
- 25 Mbps Download/3 Mbps Upload (All Fixed)
- Fiber Broadband
- Cable Broadband
- DSL Broadband
- Fixed Wireless Broadband
- Mobile 5G & LTE Broadband
- Max Adv. Download Speed ($\geq 25M/3M$)
- Max Adv. Upload Speed ($\geq 25M/3M$)
- Density of Providers ($\geq 100M/20M$)
- Density of Providers ($\geq 25M/3M$)
- Underserved Wireline Areas
- Underserved Areas (Fixed, Terrestrial)
- Unserved Areas at 25M/3M (Census 2010)

GENERAL FEDERAL STATE PROJECTS

- Schools K-12
- Libraries
- Healthcare Facilities
- Public Safety Facilities
- Universities
- Economic Development Regions
- Boundary-based Layers (Click Text to Expand)
- Census Blocks (2010)
- Congressional Districts (2020 redistricting)
- County Boundaries
- Electric Utility Boundaries
- Federal Lands
- Opportunity Zones (Tracts)
- School Districts (E-rate)
- State House Districts (2020 redistricting)



Speed Test Adoption Funding About



Download static maps for counties, school districts, and congressional districts at the [Illinois Broadband Lab](#)
[Download Coverage Speed Files \(Shapefile format\)](#)

Legend Query/Locate Add Data Export Map

Boundary-based Layers (Click Text to Expand)

County Boundaries

Fiber Broadband

Speed

- At Least 1 Gbps x 1 Gbps
- At Least 100 Mbps x 100 Mbps
- At Least 100 Mbps x 20 Mbps
- At Least 25 Mbps x 3 Mbps

Cable Broadband

Speed

- At Least 100 Mbps x 20 Mbps
- At Least 25 Mbps x 3 Mbps

DSL Broadband

Speed

- At Least 100 Mbps x 100 Mbps
- At Least 100 Mbps x 20 Mbps
- At Least 25 Mbps x 3 Mbps

Fixed Wireless Broadband

Speed

- At Least 1 Gbps x 1 Gbps
- At Least 100 Mbps x 100 Mbps
- At Least 100 Mbps x 20 Mbps
- At Least 25 Mbps x 3 Mbps



Density of Households in Unserved Areas

The Illinois Broadband Map

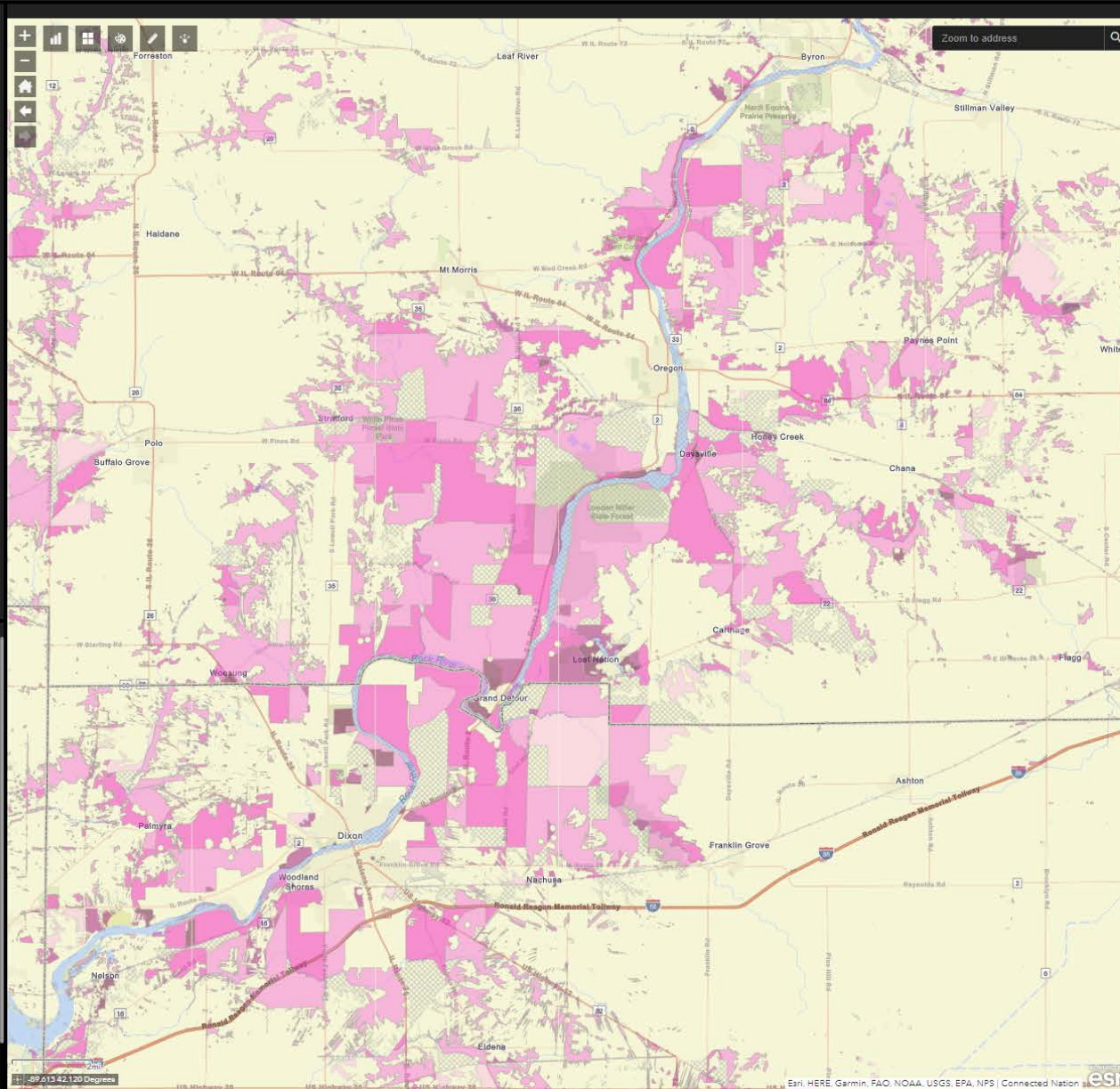
Published May 31, 2022. Please provide feedback [here](#)

ACCESS STATISTICS GRANT ELIGIBILITY

- 1 Gbps Download/1 Gbps Upload (Wireline)
- 1 Gbps Download/1 Gbps Upload (All Fixed)
- 100 Mbps Download/20 Mbps Upload (Wireline)
- 100 Mbps Download/20 Mbps Upload (All Fixed)
- Unserved Area - Lacking 100 Mbps Download/20 Mbps Upload
- 25 Mbps Download/3 Mbps Upload (Wireline)
- 25 Mbps Download/3 Mbps Upload (All Fixed)
- Fiber Broadband
- Cable Broadband
- DSL Broadband
- Fixed Wireless Broadband
- Mobile 5G & LTE Broadband
- Max Adv. Download Speed (\geq 25M/3M)
- Max Adv. Upload Speed (\geq 25M/3M)
- Density of Providers (\geq 100M/20M)
- Density of Providers (\geq 25M/3M)
- Underserved Wireline Areas
- Underserved Areas (Fixed, Terrestrial)
- Unserved Areas at 25M/3M (Census 2010)

GENERAL FEDERAL STATE PROJECTS

- Schools K-12
- Libraries
- Healthcare Facilities
- Public Safety Facilities
- Universities
- Economic Development Regions
- Boundary-based Layers (Click Text to Expand)
- Census Blocks (2010)
- Congressional Districts (2020 redistricting)
- County Boundaries
- Electric Utility Boundaries
- Federal Lands
- Opportunity Zones (Tracts)
- School Districts (E-rate)
- State House Districts (2020 redistricting)



Speed Test Adoptions Funding About



Illinois Department of Commerce & Economic Opportunity
OFFICE OF BROADBAND
JB Pritzker, Governor



Take the Speed Test!

Download static maps for counties, school districts, and congressional districts at the [Illinois Broadband Lab](#)

[Download Coverage Speed Files \(Shapefile format\)](#)

Legend Query/Locate Add Data Export/Map

Boundary-based Layers (Click Text to Expand)

County Boundaries



Unserved Areas at 25M/3M (Census 2010)

Unserved Households per Sqmi, per Census Block

- Greater than 100
- 51 - 100
- 11 - 50
- 2 - 10
- >0 - 1
- Zero Households or None Unserved

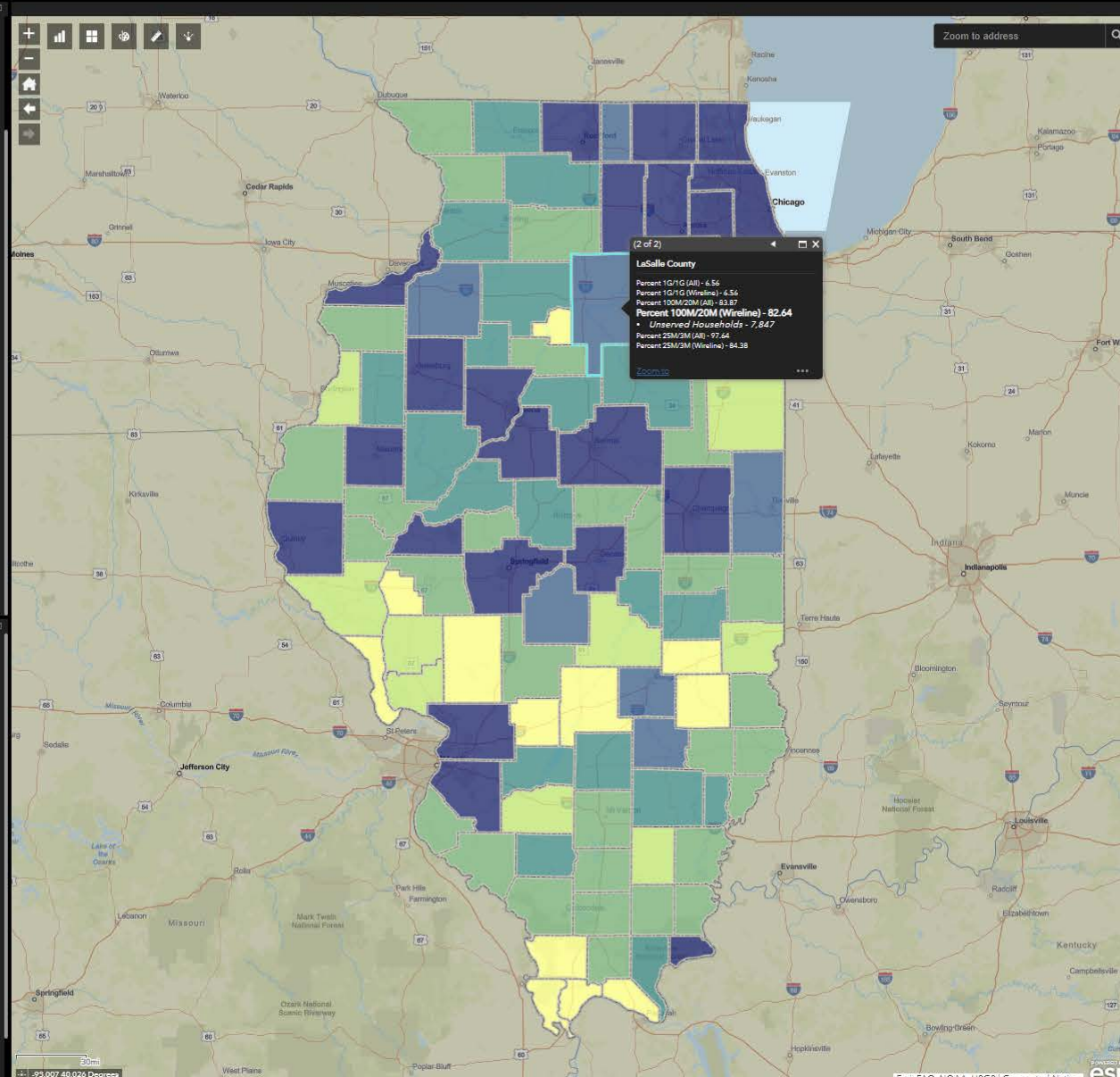
Access Statistics by County

The Illinois Broadband Map

Published May 31, 2022. Please provide feedback [here](#).

- ACCESS
- STATISTICS
- GRANT ELIGIBILITY
- Internet Access by Age - by County (ACS-Census)
- Internet Access by Age - by Tract (ACS-Census)
- Internet Access by Education - by County (ACS-Census)
- Internet Access by Education - by Tract (ACS-Census)
- Race Predominance - by County (ACS-Census)
- Race Predominance - by Tract (ACS-Census)
- Broadband Availability by Household (Click Text to Expand Group Layer)
- County - 1 Gbps Down/1 Gbps Up (All Fixed)
- County - 1 Gbps Down/1 Gbps Up (Wireline)
- County - 100 Mbps Down/20 Mbps Up (All Fixed)
- County - 100 Mbps Down/20 Mbps Up (Wireline)
- County - 25 Mbps Down/3 Mbps Up (All Fixed)
- County - 25 Mbps Down/3 Mbps Up (Wireline)
- School District - 100 Mbps Down/20 Mbps Up (All Fixed)
- School District - 100 Mbps Down/20 Mbps Up (Wireline)
- School District - 25 Mbps Down/3 Mbps Up (All Fixed)
- School District - 25 Mbps Down/3 Mbps Up (Wireline)
- Broadband Adoption (Subscriptions) - ACS-Census
- Percent of Households with an Internet Subscription
- Percent of Households with No Internet Subscription/No Access
- Density of Households with No Internet Subscription/No Access

- GENERAL
- FEDERAL
- STATE PROJECTS
- Schools K-12
- Libraries
- Healthcare Facilities
- Public Safety Facilities
- Universities
- Economic Development Regions
- Boundary-based Layers (Click Text to Expand)
- Census Blocks (2010)
- Congressional Districts (2020 redistricting)
- County Boundaries
- Electric Utility Boundaries
- Federal Lands
- Opportunity Zones (Tracts)
- School Districts (E-rate)
- State House Districts (2020 redistricting)



Speed Test Adoption Funding About

Illinois Department of Commerce & Economic Opportunity
OFFICE OF BROADBAND
@ President, Governor

Take the Speed Test!

Download static maps for counties, school districts, and congressional districts at the [Illinois Broadband Lab](#)

[Download Coverage Speed Files \(Shapefile format\)](#)

Legend Query/Locate Add Data Export Map

Boundary-based Layers (Click Text to Expand)

County Boundaries

Broadband Availability by Household (Click Text to Expand Group Layer)

County - 100 Mbps Down/20 Mbps Up (Wireline)

- 90.01 - 100%
- 80.01 - 90%
- 70.01 - 80%
- 60.01 - 70%
- 50-60%
- <50%

Esri: FAO, NOAA, USGS | Connected Nation esri

Access Statistics by School District

The Illinois Broadband Map

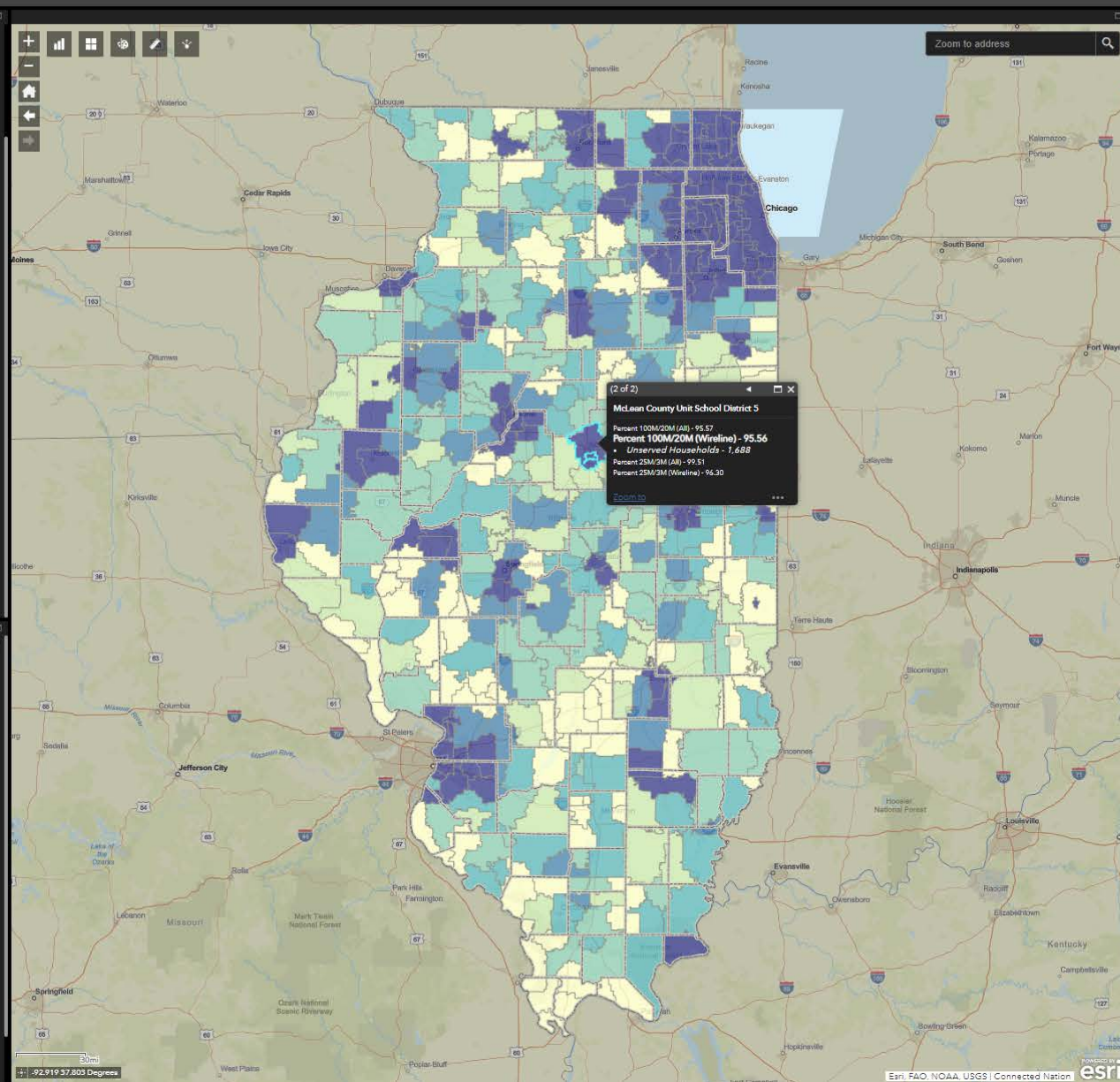
Published May 31, 2022. Please provide feedback [here](#).

ACCESS STATISTICS GRANT ELIGIBILITY

- Internet Access by Age - by County (ACS-Census)
- Internet Access by Age - by Tract (ACS-Census)
- Internet Access by Education - by County (ACS-Census)
- Internet Access by Education - by Tract (ACS-Census)
- Race Predominance - by County (ACS-Census)
- Race Predominance - by Tract (ACS-Census)
- Broadband Availability by Household (Click Text to Expand Group Layer)
- County - 1 Gbps Down/1 Gbps Up (All Fixed)
- County - 1 Gbps Down/1 Gbps Up (Wireline)
- County - 100 Mbps Down/20 Mbps Up (All Fixed)
- County - 100 Mbps Down/20 Mbps Up (Wireline)
- County - 25 Mbps Down/3 Mbps Up (All Fixed)
- County - 25 Mbps Down/3 Mbps Up (Wireline)
- School District - 100 Mbps Down/20 Mbps Up (All Fixed)
- School District - 100 Mbps Down/20 Mbps Up (Wireline)
- School District - 25 Mbps Down/3 Mbps Up (All Fixed)
- School District - 25 Mbps Down/3 Mbps Up (Wireline)
- Broadband Adoption (Subscriptions) - ACS-Census
- Percent of Households with an Internet Subscription
- Percent of Households with No Internet Subscription/No Access
- Density of Households with No Internet Subscription/No Access

GENERAL FEDERAL STATE PROJECTS

- Schools K-12
- Libraries
- Healthcare Facilities
- Public Safety Facilities
- Universities
- Economic Development Regions
- Boundary-based Layers (Click Text to Expand)
- Census Blocks (2010)
- Congressional Districts (2020 redistricting)
- County Boundaries
- Electric Utility Boundaries
- Federal Lands
- Opportunity Zones (Tracts)
- School Districts (E-rate)
- State House Districts (2020 redistricting)



Speed Test Adoption Funding About

Illinois Department of Commerce & Economic Opportunity
OFFICE OF BROADBAND
JB Pritzker, Governor

Take the Speed Test!

Download static maps for counties, school districts, and congressional districts at the [Illinois Broadband Lab](#)

[Download Coverage Speed Files \(Shapefile format\)](#)

Legend Query/Layers Add Data Export Map

Boundary-based Layers (Click Text to Expand)

County Boundaries

Broadband Availability by Household (Click Text to Expand Group Layer)

School District - 100 Mbps Down/20 Mbps Up (Wireline)

- 90.01 - 100%
- 80.01 - 90%
- 70.01 - 80%
- 60.01 - 70%
- 50 - 60%
- <50%

Adoption (ACS Census Data, Census Tract level)- % and Density of Households without an internet subscription

The Illinois Broadband Map

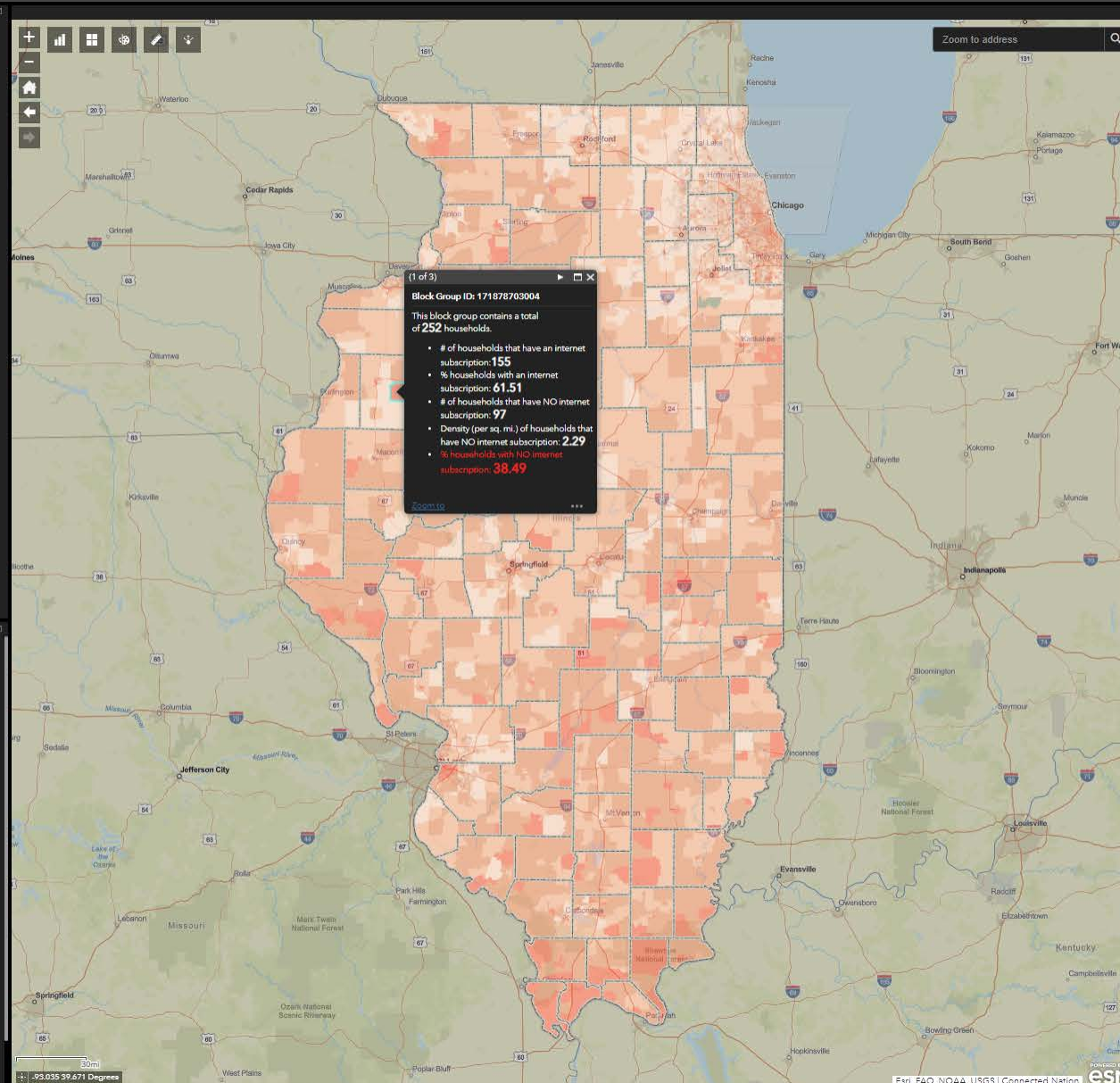
Published May 31, 2022. Please provide feedback [here](#).

ACCESS STATISTICS GRANT ELIGIBILITY

- Educational Attainment - by County (ACS-Census)
- Educational Attainment - by Tract (ACS-Census)
- Income - Median Household - by County (ACS-Census)
- Income - Median Household - by Tract (ACS-Census)
- Internet Access by Age - by County (ACS-Census)
- Internet Access by Age - by Tract (ACS-Census)
- Internet Access by Education - by County (ACS-Census)
- Internet Access by Education - by Tract (ACS-Census)
- Race Predominance - by County (ACS-Census)
- Race Predominance - by Tract (ACS-Census)
- Broadband Availability by Household (Click Text to Expand Group Layer)
- Broadband Adoption (Subscriptions) - ACS-Census
 - Percent of Households with an Internet Subscription
 - Percent of Households with No Internet Subscription/No Access
 - Density of Households with No Internet Subscription/No Access

GENERAL FEDERAL STATE PROJECTS

- Schools K-12
- Libraries
- Healthcare Facilities
- Public Safety Facilities
- Universities
- Economic Development Regions
- Boundary-based Layers (Click Text to Expand)
 - Census Blocks (2010)
 - Congressional Districts (2020 redistricting)
 - County Boundaries
 - Electric Utility Boundaries
 - Federal Lands
 - Opportunity Zones (Tracts)
 - School Districts (E-rate)
 - State House Districts (2020 redistricting)



Speed Test Adoption Funding About

Illinois Department of Commerce & Economic Opportunity
OFFICE OF BROADBAND
Prizes Governor

Take the Speed Test!

Download static maps for counties, school districts, and congressional districts at the [Illinois Broadband Lab](#)

[Download Coverage Speed Files \(Shapefile format\)](#)

Legend Query/Locate Add Data Export Map

Boundary-based Layers (Click Text to Expand)
County Boundaries

Broadband Adoption (Subscriptions) - ACS-Census
Percent of Households with No Internet Subscription/No Access

- > 35%
- 21 - 35%
- 10 - 20%
- < 10%
- n/a

Esri, FAO, NOAA, USGS | Connected Nation

Connect Illinois Infrastructure Grant Funding

The Illinois Broadband Map

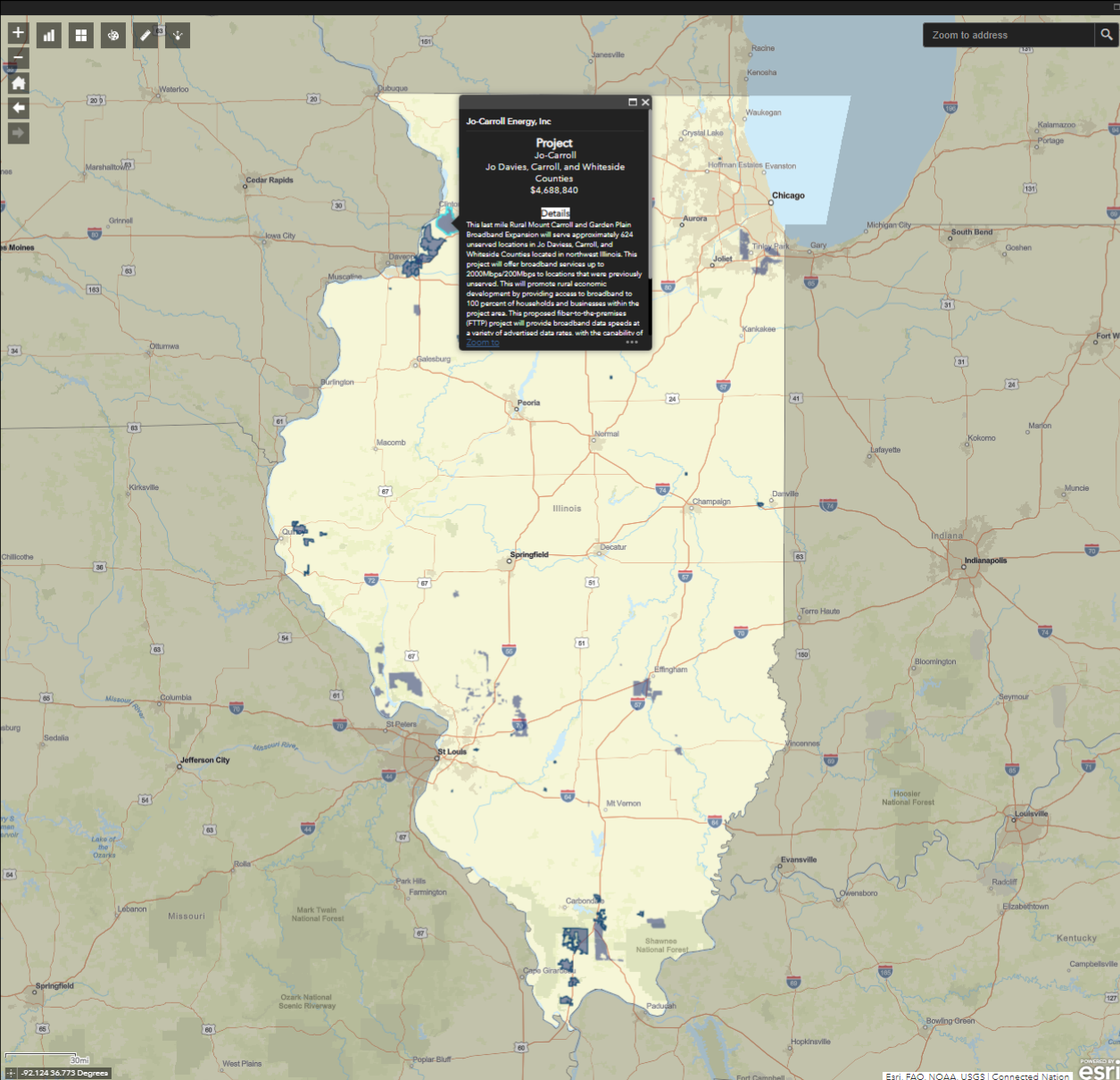
Published May 31, 2022. Please provide feedback [here](#).

ACCESS STATISTICS GRANT ELIGIBILITY

- 1 Gbps Download/1 Gbps Upload (Wireline)
- 1 Gbps Download/1 Gbps Upload (All Fixed)
- 100 Mbps Download/20 Mbps Upload (Wireline)
- 100 Mbps Download/20 Mbps Upload (All Fixed)
- Unserved Areas - Lacking 100 Mbps Download/20 Mbps Upload
- 25 Mbps Download/3 Mbps Upload (Wireline)
- 25 Mbps Download/3 Mbps Upload (All Fixed)
- Fiber Broadband
- Cable Broadband
- DSL Broadband
- Fixed Wireless Broadband
- Mobile 5G & LTE Broadband
- Max Adv. Download Speed (≥ 25M/3M)
- Max Adv. Upload Speed (≥ 25M/3M)
- Density of Providers (≥ 100M/20M)
- Density of Providers (≥ 25M/3M)
- Underserved Wireline Areas
- Underserved Areas (Fixed, Terrestrial)
- Unserved Areas at 25M/3M (Census 2010)

GENERAL FEDERAL STATE PROJECTS

- Connect Illinois Public WiFi Hotspots
- Connect Illinois Round 2 Project Grants
- Connect Illinois Round 1 Project Grants
- IDOT Multi-Year Plan



Speed Test Adoption Funding About



Download static maps for counties, school districts, and congressional districts at the [Illinois Broadband Lab](#)
Download Coverage Speed Files (Shapefile format)

Legend Query/Locate Add Data Export Map

- Connect Illinois Round 2 Project Grants
- Connect Illinois Round 1 Project Grants

Federal Broadband Buildout Commitments/ Eligible Areas

The Illinois Broadband Map

Published May 31, 2022. Please provide feedback [here](#).

ACCESS STATISTICS GRANT ELIGIBILITY

- 1 Gbps Download/1 Gbps Upload (Wireline)
- 1 Gbps Download/1 Gbps Upload (All Fixed)
- 100 Mbps Download/20 Mbps Upload (Wireline)
- 100 Mbps Download/20 Mbps Upload (All Fixed)
- Unserved Areas - Lacking 100 Mbps Download/20 Mbps Upload
- 25 Mbps Download/3 Mbps Upload (Wireline)
- 25 Mbps Download/3 Mbps Upload (All Fixed)
- Fiber Broadband
- Cable Broadband
- DSL Broadband
- Fixed Wireless Broadband
- Mobile 5G & LTE Broadband
- Max Adv. Download Speed (≥ 25M/3M)
- Max Adv. Upload Speed (≥ 25M/3M)
- Density of Providers (≥ 100M/20M)
- Density of Providers (≥ 25M/3M)
- Underserved Wireline Areas
- Underserved Areas (Fixed, Terrestrial)
- Unserved Areas at 25M/3M (Census 2010)

GENERAL FEDERAL STATE PROJECTS

- FCC Registered Antenna Structures
- USDA ReConnect - Funded
- All FCC Buildout Commitments
 - by Federal Program
 - FCC Commitments and Deployments
 - Federal Buildout Commitments/Eligible Areas (Zoom-in to see eligible areas)
 - Alternative-Connect America Cost Model (A-CAM) Eligible Areas
 - Connect America Fund (CAF) Phase II Auction Winning Bid Areas
 - Connect America Fund (CAF) Phase II Commitment Areas
 - Rural Digital Opportunity Fund (RDOF) Phase 1 Winning Bid Areas
 - Federal Subsidy Program Deployment (Zoom-in to see actual locations & labels)
 - Alternative-Connect America Cost Model (A-CAM I & II)
 - Connect America Fund-Broadband Loop Support (CAF-BLS)
 - Connect America Fund (CAF) Phase II
 - Rural Broadband Experiments (RBE)

Legend Query/Locate Add Data Export Map

All FCC Buildout Commitments
by Federal Program

- ACAM
- ACAM and RDOF
- CAF II Auction
- CAF II Auction and RDOF
- CAF II
- CAF II and ACAM
- CAF II and CAF II Auction
- CAF II and RDOF
- RDOF
- *MORE THAN 2 FCC PROGRAMS

Boundary-based Layers (Click Text to Expand)
County Boundaries

Speed Test Adoption Funding About

Illinois Department of Commerce & Economic Opportunity
OFFICE OF BROADBAND
JB Priddy, Governor

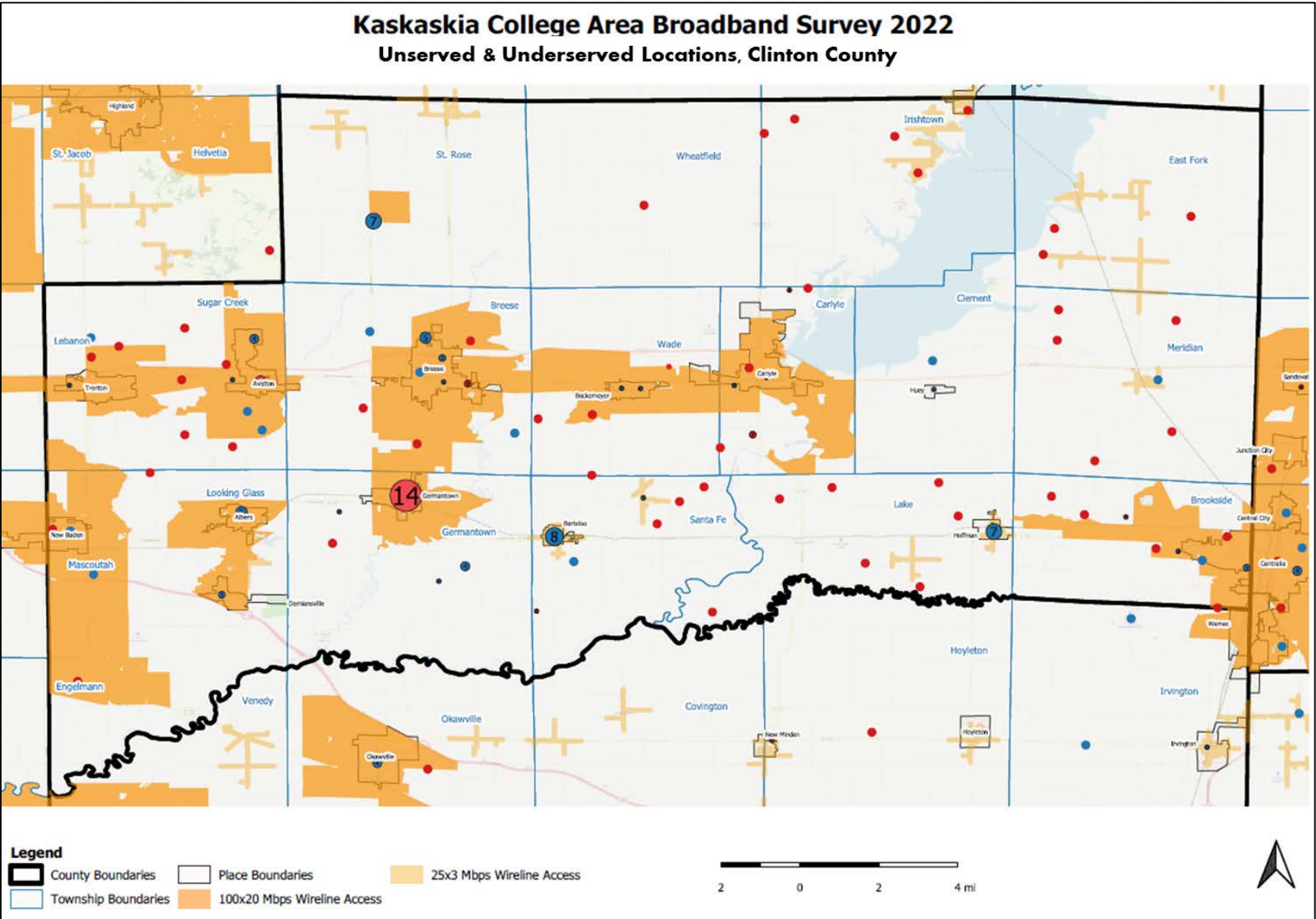
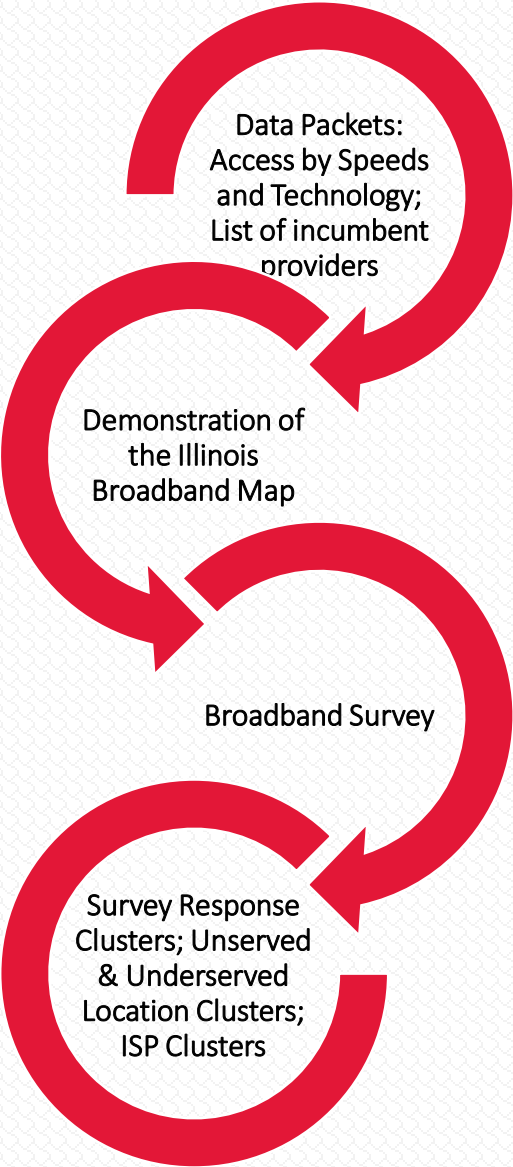
Take the Speed Test!

Download static maps for counties, school districts, and congressional districts at the [Illinois Broadband Lab](#)

[Download Coverage Speed Files \(Shapefile format\)](#)

Esri, FAO, NOAA, USGS | Connected Nation | Illinois Dept. of Commerce & Economic Opportunity - Office of Broadband

Broadband Mapping in the Accelerate Program



Example of a post-survey map created for Clinton County (Kaskaskia College Area)- Unserved and Underserved Locations

County Broadband Dashboard Demonstration



Illinois Office of Broadband Programs Dashboard

Instructions: The home page of this dashboard represents broadband programs and statistics for the entire state. Please follow the instructions below for specific County data. Please click [here](#) for data sources and broadband programs and terms information.

1. For the best experience, use a laptop/desktop screen to view this dashboard.
2. To learn about broadband programs & statistics in a specific county, click the arrow icon on the left side of the screen and select the county.

3. For the program list sections, scroll up and down or click on the expand icon on the top right of the section to view all info.
4. All info can be printed using the Print Screen option (Ctrl+P on Windows; Cmnd+P on Mac)
5. In the map, click on various projects and program locations to see more info about the project in a pop-up window.
6. Click on the Program Name links to view additional details on the web.

A. Broadband Adoption

Devices by PCs for 6.8k People (June'21-May'22)
Smartphone 399.5k dependent Households
Households 415.5k without a computer
Cellular Data 547.4k dependent Households
Households Without Internet Subscription 701.4k

B. Federal Broadband

Devices Claimed by ACP as of Sept'22 6.9k
Total ACP Subscribers as of Sept'22 302k

C. State Digital Equity Programs

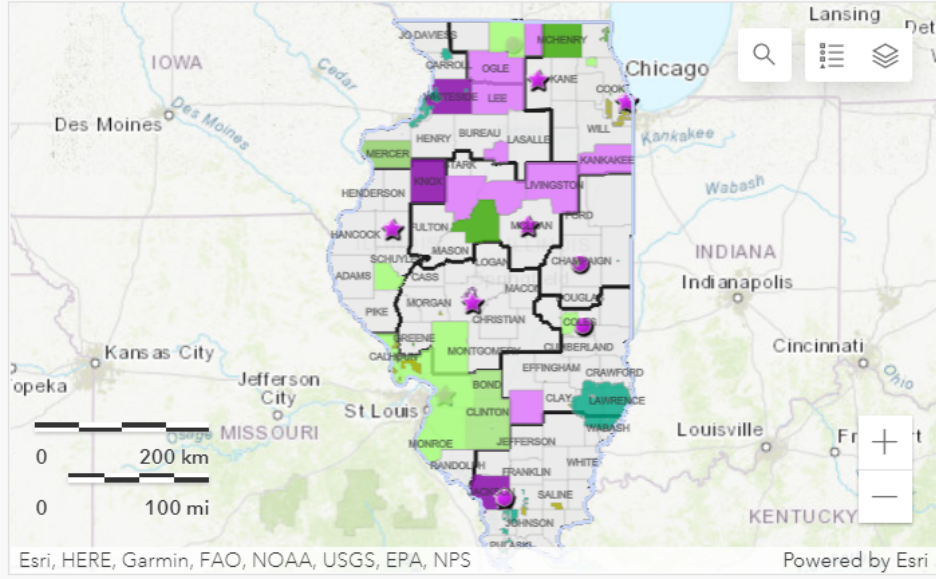
<p>Illinois Connect Communities (Round1, Round2)</p> <ul style="list-style-type: none"> McKinley Park Development Council Village of Flanagan 	<h1>20</h1> <p>grant(s)</p>
<p>Regional Engagement for Adoption+Digital Equity (READY)</p> <ul style="list-style-type: none"> University of Illinois Urbana - Champaign Eastern Illinois University 	<h1>10</h1> <p>grant(s)</p>
<p>Accelerate Illinois Broadband Infra Planning Program Grants</p> <ul style="list-style-type: none"> Ogle & Partners- Ogle, Boone, Lee, Putnam Kaskaskia College Area- Clinton, Washington, Marion 	<h1>12</h1> <p>grant(s)</p>

D. State Infrastructure Funding Programs

<p>Connect Illinois Broadband Infrastructure projects (Round1, Round2)</p> <ul style="list-style-type: none"> Jersey County Fiber Project (\$1,483,007) Mediacom Edgewood (\$249,424) Mediacom Franklin (\$210,831) 	<h1>26</h1> <p>project(s)</p> <h1>\$34.4M</h1>
---	--

E. Public WiFi Hotspots

561



Map Legend

- Illinois State Boundary
- Drive Up WiFi Hotspots
- Connect Illinois Broadband Infrastructure Projects

Year

F. Broadband Access by Speeds

4.998M
Households

Median Household Income (\$)
58.1k

Unserviced & Underserved Households (Wireline Broadband)

Served	92.94%	4.6M
Underserved	5.72%	286.1k
Unserviced	1.34%	67.1k



Illinois Office of Broadband Programs Dashboard

Instructions: The home page of this dashboard represents broadband programs and statistics for the entire state. Please follow the instructions below for specific County data. Please click [here](#) for data sources and broadband programs and terms information.

1. For the best experience, use a laptop/desktop screen to view this dashboard.
2. To learn about broadband programs & statistics in a specific county, click the arrow icon on the left side of the screen and select the county.

3. For the program list sections, scroll up and down or click on the expand icon on the top right of the section to view all info.
4. All info can be printed using the Print Screen option (Ctrl+P on Windows; Cmnd+P on Mac)
5. In the map, click on various projects and program locations to see more info about the project in a pop-up window.
6. Click on the Program Name links to view additional details on the web.

A. Broadband Adoption

Devices by PCs for 1.8k People (June 21-May'22)

Smartphone 167.9k dependent Households

Households 171.9k without a computer

Cellular Data 218k dependent Households

Households Without Internet Subscription 299k

C. State Digital Equity Programs

Illinois Connect Communities ([Round1](#), [Round2](#))

McKinley Park Development Council

Palatine Community Consolidated School District 15

7

grant(s)

[Regional Engagement for Adoption+Digital Equity \(READY\)](#)

Chicago State University

1

grant(s)

[Accelerate Illinois Broadband Infra Planning Program Grants](#)

Opportunity to explore Illinois Office of Broadband's Connect Illinois Broadband Infrastructure funding

0

grant(s)

D. State Infrastructure Funding Programs

Connect Illinois Broadband Infrastructure projects ([Round1](#), [Round2](#))

Chicago Southland Fiber Network Expansion (\$1,876,581)

Palantine (\$101,387)

2

project(s)

\$2M

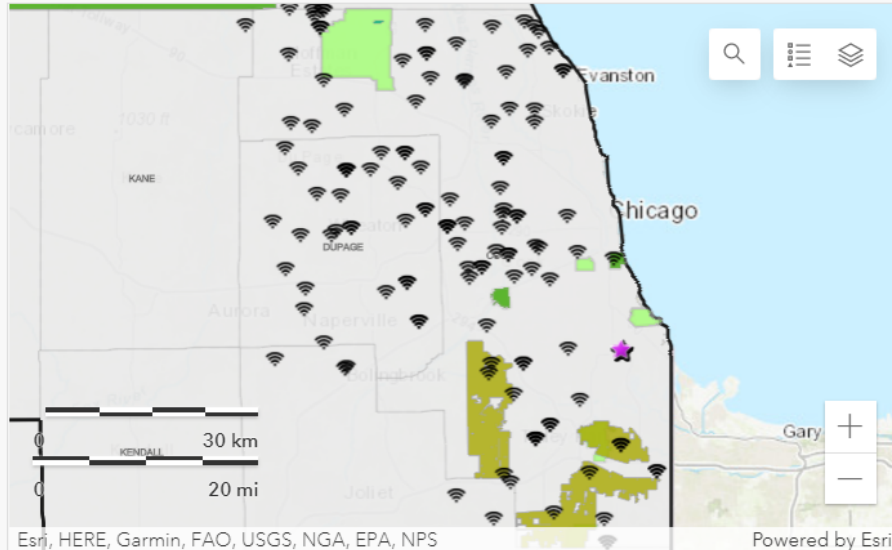
E. Public WiFi Hotspots

87

B. Federal Broadband

Devices Claimed by 3.4k ACP as of Sept'22

Total ACP Subscribers as of Sept'22 150.2k



Map Legend

Drive Up WiFi Hotspots

Drive Up WiFi Hotspots

Connect Illinois Broadband Infrastructure Projects

Year

2020

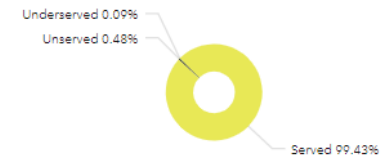
2021

F. Broadband Access by Speeds

2.087M Households

Median Household Income (\$)

Unserved & Underserved Households (Wireline Broadband)



Served 2.1M
 Unserved 10k
 Underserved 1.9k

Illinois Office of Broadband Programs

- Connect Illinois Infrastructure Funding
- Illinois Connected Communities
- Broadband Regional Engagement for Adoption + Digital Equity (READY)
- Accelerate Illinois Broadband Infrastructure Planning Programs

CONNECT ILLINOIS Broadband Infrastructure Grant Program

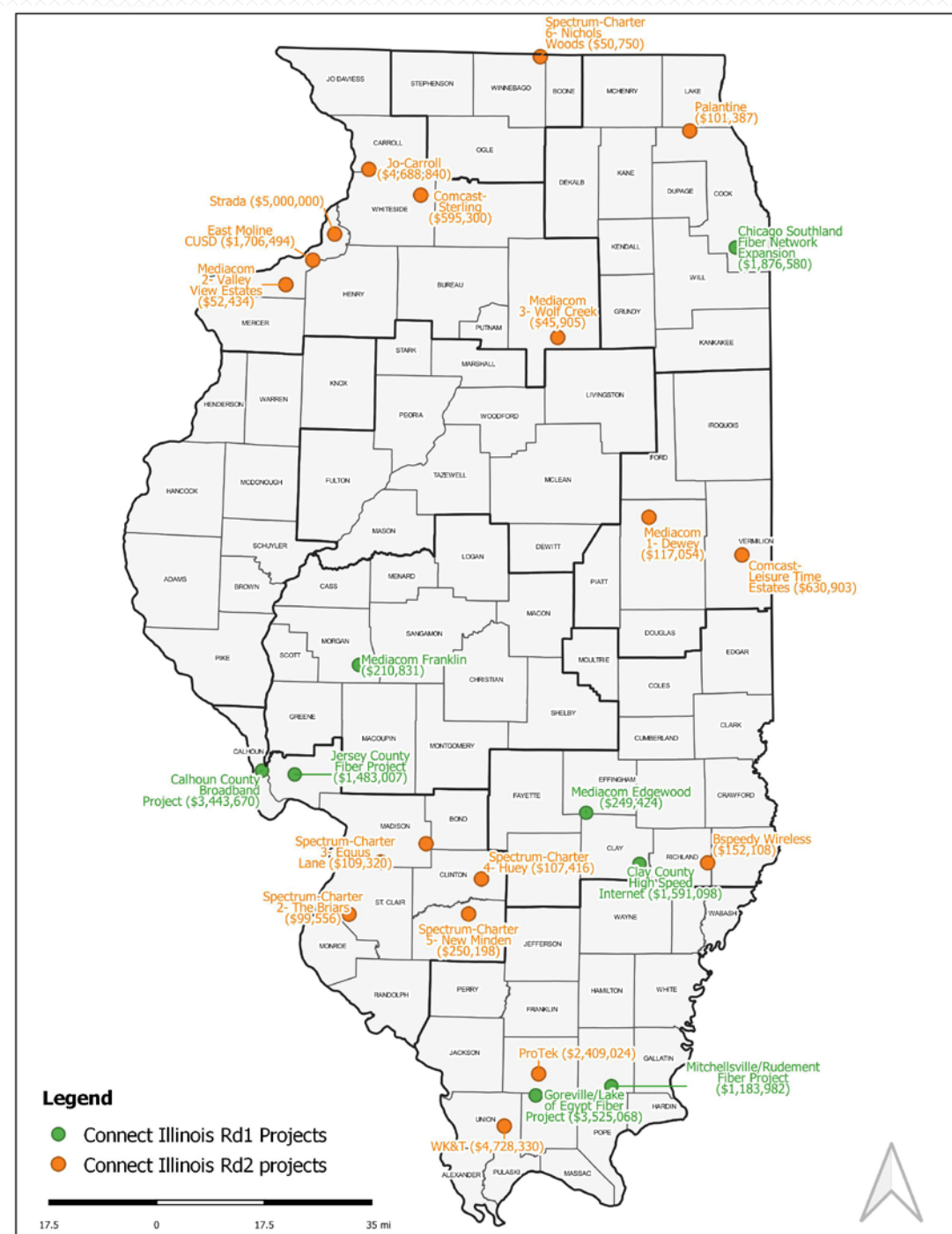
Rd1- \$13,563,660.48 for 8 projects

Rd2- \$20,874,574.00 for 18 projects

Rd3- Accepting applications. Will begin merit review process and allocate funds after the rule making process*

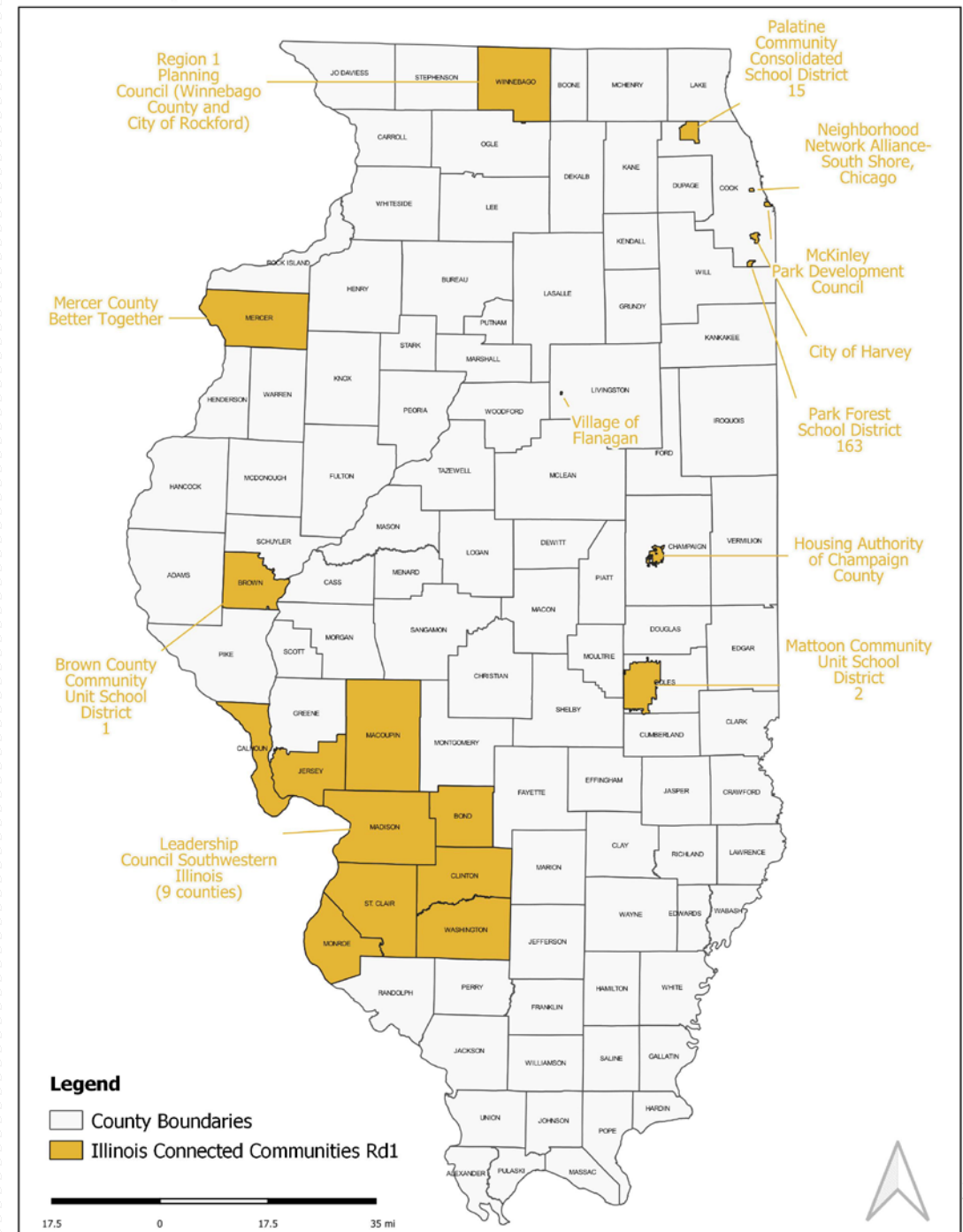
Estimated Total Program Funding	\$350,000,000
Award Range	\$0 - \$10,000,000
Source of Funding	Federal and State
Application Date Range	Applications will be accepted on a rolling basis

* The 2022 Illinois General Assembly enacted the [Broadband Infrastructure Advancement Act](#) (P.A. 102-0699). The Act requires the Department of Commerce and Economic Opportunity to establish procedural rules for broadband grant administration.



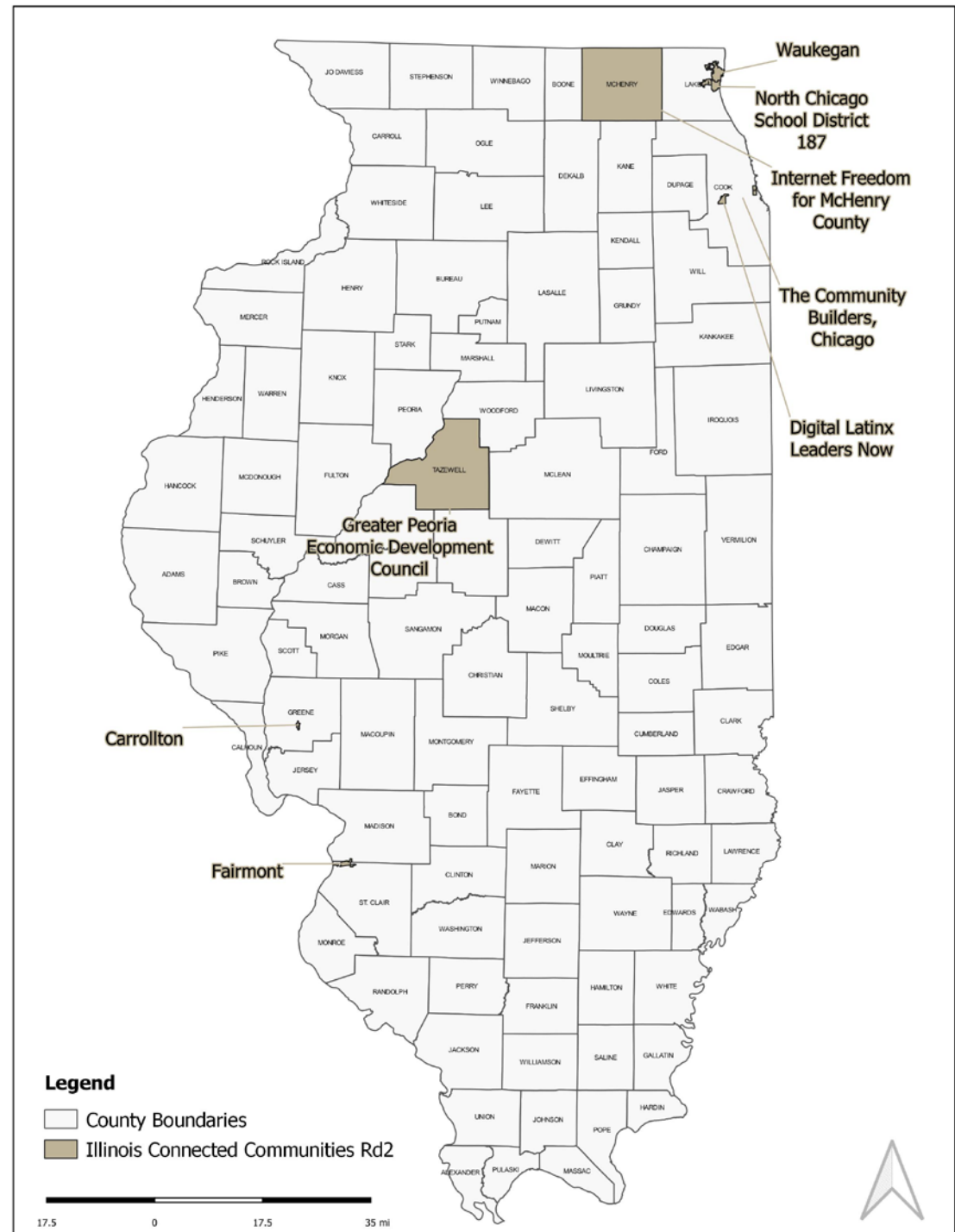
Illinois Connected Communities Rd I

- A partnership among the Illinois Office of Broadband, Benton Institute for Broadband & Society, and local philanthropy
- Communities choose if they want to work on broadband access, adoption, or use
- Well-rounded and committed team is the foundation to make the program work
- 12-month program + 50 hours of expert consultation + state grant of up to \$15,000



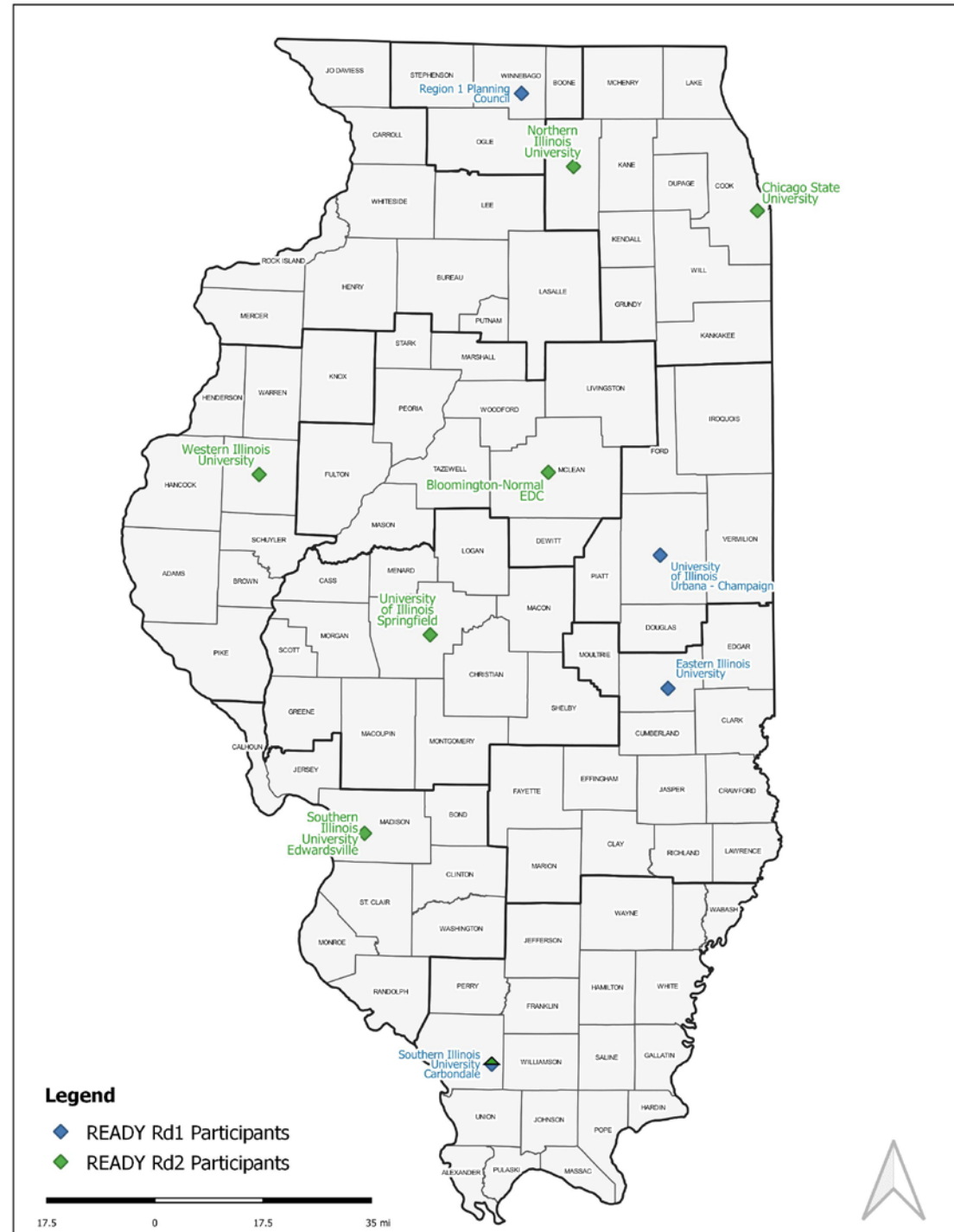
Illinois Connected Communities Rd II

By the end of the program, each Illinois Connected Community completes a community-driven, **broadband strategic plan**- community's broadband vision and an action plan for progress toward improved broadband access, adoption, or use.



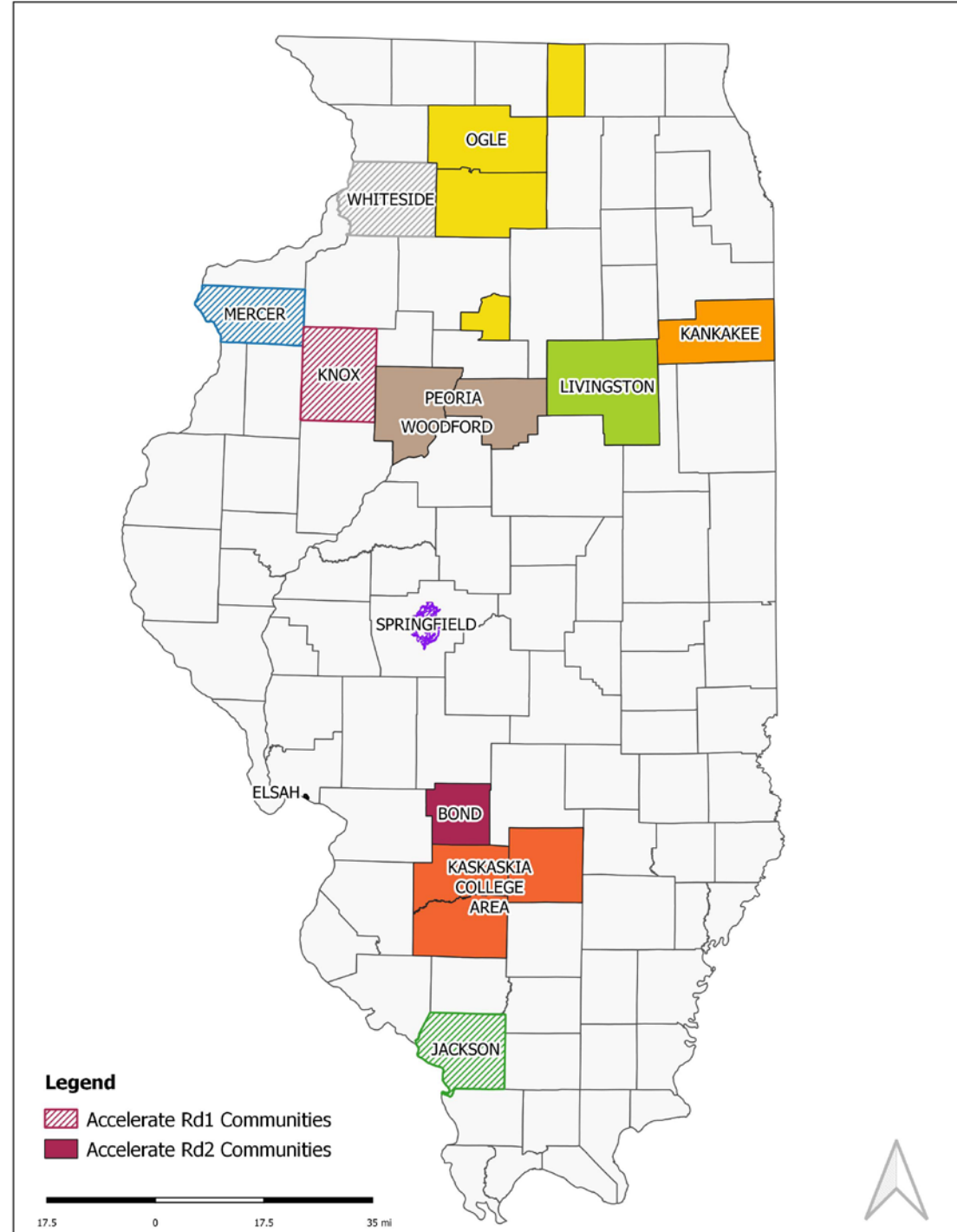
Broadband READY

- Regional Engagement for Adoption + Digital Equity
- Program Summary
 - Align local and regional efforts toward shared goals in broadband access, adoption, and utilization
 - Drive broadband collaboration among stakeholders
 - Efforts seek to ensure affordable in-home broadband service, access to personal computers, digital literacy training, and ongoing technical support
 - + identify best practices, key digital indicators
- Grant Amount
 - Up to \$50,000 per region



Accelerate Illinois Broadband Infrastructure Planning Programs

- Collaboration among the Illinois Office of Broadband, the Benton Institute for Broadband and Society, Heartland Forward, and the University of Illinois Extension.
- 14-week community engagement + 30-plus hours of expert consultation and best-practices
- The objective is for communities to build partnerships and efficiently utilize the state's Connect Illinois and federal broadband funding for broadband infrastructure expansion.



Thank You

Shubhika Agarwal

Visiting Coordinator for Broadband | Planner- GIS & Community Engagement

Office of Vice President for Economic Development & Innovation | University of Illinois System

Illinois Broadband Lab

sa38@uillinois.edu